



ON-SITE EXCELLENCE - SINCE 1978

## NORDIC MODULAR OXYGEN O200 SERIES



### KEY FEATURES

- Energy consumption from 0.7 kW/Nm<sup>3</sup>
- All pipes and valves are made of stainless steel (SS 316L)
- Sandblasted and power coated for extended lifetime
- Modbus RTU
- LED visual operation status

Oxygen

Capacity:  
18 to 80 Nm<sup>3</sup>/h  
at 93 % purity  
Energy consumption  
from  
0.7 kW/Nm<sup>3</sup>

### MAKERS LIST

ITEM	ORIGIN	MATERIAL/DESCRIPTION
Angle seated pneumatic valves	Germany	SS316L body, PA actuator
Adsorber vessels	Denmark	Mild steel power coated, 11.9 bar(g)
Reduction valve	Germany	SS316L body
Safety valve	Italy	Brass, Viton
7" colour touch	Germany	IP 54 electrical cabinet
PLC	Germany	Pressure & purity
Molecular sieve	Japan/China	13X Zeolite
Oxygen analyser & control	EU	Zirconium, sensor

### OPTIONS

ITEM	ORIGIN	MATERIAL/DESCRIPTION
UPS	Germany	Battery backup
Alarm	EU	Visual, acoustic, signal
Flow limiter	Germany	SS316L pipe, PA house
Output 4-20 mA	EU	Pressure & purity
GSM modem	EU	SMS, alarm
Modbus TCP/IP	EU	Communication Protocol

### COMPRESSED AIR SPECIFICATIONS

Maximum operating pressure	11.9 bar(g)
Operating temperature	0-50 °C
Minimum inlet pressure	3.5 bar(g)
pressure dew point	max +3 °C
Air quality ISO specification	ISO 8573.1:2010.2.4.1

### ADD-ONS

ITEM	ORIGIN	MATERIAL/DESCRIPTION
Compressor	Germany/Norway	Oil lubricated/oil-free screw type
Air dryer	Germany/Norway	Refrigeration/adsorption dryer
Air & product tank pack	EU	Up to 11.9 bar(g)
High pressure filling station	USA/EU	Up to 300 bar(g)

### CONNECTIONS

Air & oxygen	DN40, ANSI-flanges, DIN-flanges or thread
Exhaust	Diameter 400 mm
Power supply	1 ph, 110-220 V, 50-60 Hz

**Denmark**  
(Headquarter, Production, R&D, Sales and Service)  
Fasanvej 18-20  
DK-3200 Helsingør, Denmark  
+45 48 797 811

**Slovakia**  
(Production, R&D, Project, Sales and Service)  
Vadovce 87  
SK-916 13 Vadovce, Slovakia  
+421 32 779 0123

**China**  
(Sales and Service)  
2009 Hehe Plaza, Yuhang,  
311100 Hangzhou, China  
+86 571 862 068 53



# ON-SITE EXCELLENCE - SINCE 1978

## PERFORMANCE

### O200 Series

Generator Model			92%	93%	94%	95%
O200-1 Min Air/Gas: 380 liters	2,5 bar(g)	N <sub>2</sub> m <sup>3</sup> /hour	19.17	18.09	16.74	15.39
		Air m <sup>3</sup> /min	3.00	2.95	2.93	2.95
	4 bar(g)	N <sub>2</sub> m <sup>3</sup> /hour	21.30	20.10	18.60	17.10
		Air m <sup>3</sup> /min	3.37	3.32	3.32	3.33
	5 bar(g)	N <sub>2</sub> m <sup>3</sup> /hour	22.80	21.60	19.95	18.00
		Air m <sup>3</sup> /min	3.72	3.67	3.66	3.66
	6 bar(g)	N <sub>2</sub> m <sup>3</sup> /hour	24.00	22.80	21.15	19.20
		Air m <sup>3</sup> /min	4.04	3.99	3.98	4.00
O200-2 Min Air/Gas: 760 liters	2,5 bar(g)	N <sub>2</sub> m <sup>3</sup> /hour	38.34	36.18	33.48	30.78
		Air m <sup>3</sup> /min	6.01	5.91	5.86	5.90
	4 bar(g)	N <sub>2</sub> m <sup>3</sup> /hour	42.60	40.20	37.20	34.20
		Air m <sup>3</sup> /min	6.75	6.63	6.63	6.67
	5 bar(g)	N <sub>2</sub> m <sup>3</sup> /hour	45.60	43.20	39.90	36.00
		Air m <sup>3</sup> /min	7.45	7.34	7.32	7.32
	6 bar(g)	N <sub>2</sub> m <sup>3</sup> /hour	48.00	45.60	42.30	38.40
		Air m <sup>3</sup> /min	8.08	7.98	7.97	8.00
O200-3 Min Air/Gas: 1140 liters	2,5 bar(g)	N <sub>2</sub> m <sup>3</sup> /hour	53.68	50.65	46.87	43.09
		Air m <sup>3</sup> /min	8.41	8.27	8.20	8.26
	4 bar(g)	N <sub>2</sub> m <sup>3</sup> /hour	59.64	56.28	52.08	47.88
		Air m <sup>3</sup> /min	9.44	9.29	9.29	9.34
	5 bar(g)	N <sub>2</sub> m <sup>3</sup> /hour	63.84	60.48	55.86	50.40
		Air m <sup>3</sup> /min	10.43	10.28	10.24	10.25
	6 bar(g)	N <sub>2</sub> m <sup>3</sup> /hour	67.20	63.84	59.22	53.76
		Air m <sup>3</sup> /min	11.31	11.17	11.15	11.20
O200-4 Min Air/Gas: 1520 liters	2,5 bar(g)	N <sub>2</sub> m <sup>3</sup> /hour	67.10	63.32	58.59	53.87
		Air m <sup>3</sup> /min	10.51	10.34	10.25	10.32
	4 bar(g)	N <sub>2</sub> m <sup>3</sup> /hour	74.55	70.35	65.10	59.85
		Air m <sup>3</sup> /min	11.80	11.61	11.61	11.67
	5 bar(g)	N <sub>2</sub> m <sup>3</sup> /hour	79.80	75.60	69.83	63.00
		Air m <sup>3</sup> /min	13.03	12.85	12.80	12.81
	6 bar(g)	N <sub>2</sub> m <sup>3</sup> /hour	84.00	79.80	74.03	67.20
		Air m <sup>3</sup> /min	14.14	13.97	13.94	14.00

7" Touch, Intellicontrol and analyser included, filterpackage for air and gas included

Indicative data & prices, March 26th 2019



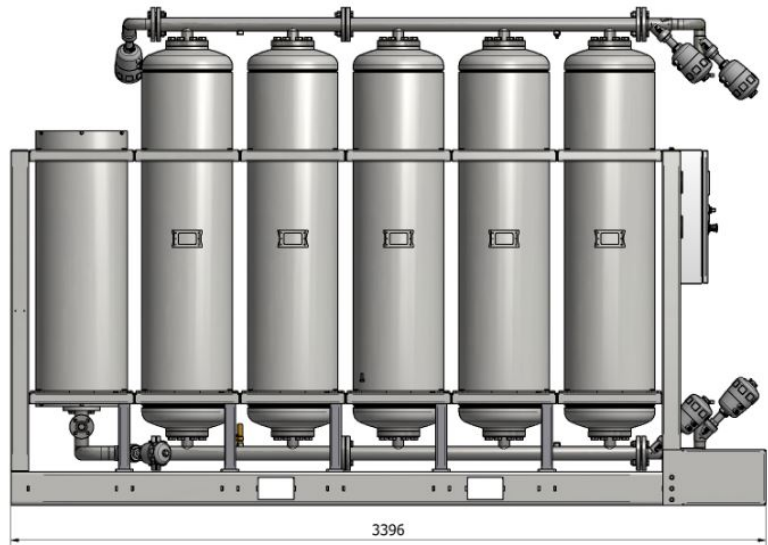
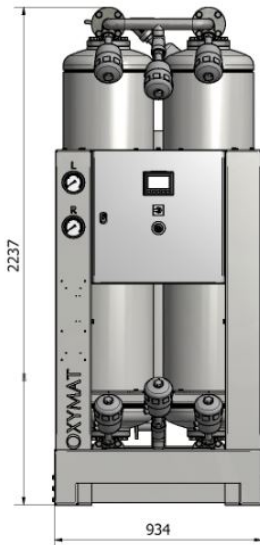
ON-SITE EXCELLENCE - SINCE 1978

## CORRECTION TABLE

### AMBIENT TEMPERATURE

Ambient temperature impact on oxygen capacity								
°C	15	20	25	35	35	40	45	50
Factor	1.00	1.00	1.00	1.00	0.95	0.9	0.85	0.72

## DIMENSIONS



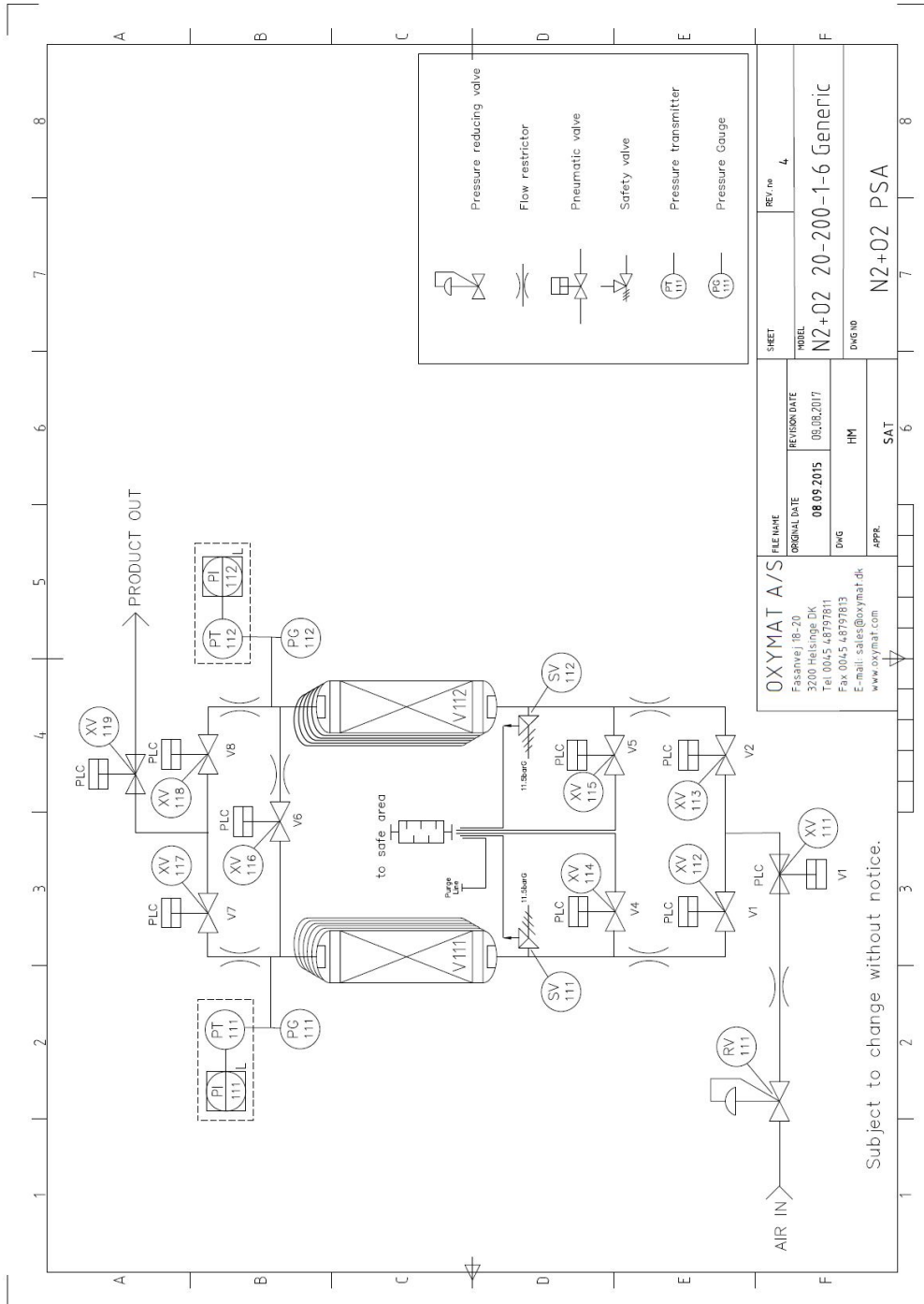
## WEIGHT & DIMENSIONS

Model	O200-1	O200-2	O200-3	O200-4
Weight [kg]	965	1595	2240	2820
Dimension LxWxH [mm]	1499x934x2237	1973x934x2237	2449x934x2237	2538x934x2237



# ON-SITE EXCELLENCE - SINCE 1978

## GENERIC P&ID



**Denmark**  
 (Headquarter, Production, R&D, Sales and Service)  
 Fasanvej 18-20  
 DK-3200 Helsingør, Denmark  
 +45 48 797 811

**Slovakia**  
 (Production, R&D, Project, Sales and Service)  
 Vadovce 87  
 SK-916 13 Vadovce, Slovakia  
 +421 32 779 0123

**China**  
 (Sales and Service)  
 2009 Hehe Plaza, Yuhang,  
 311100 Hangzhou, China  
 +86 571 862 068 53