

Design Features

Intuitive Digital Control

Grade gap & speed adjustment
Integrated counter control
Inlet density feedback
Historic data storage/reference for quick setup

Magnetic Hub Motor Drives

Direct driven
No maintenance or lubrication
316 Stainless steel construction
Constant torque

Soft Drop Collection Pan

Curved contact surfaces reduce impacts
Curved design allows for lower drop heights

Reversible Discharge Outlets

Discharge can quickly and easily be moved from side to side

Deep V Grade Channels

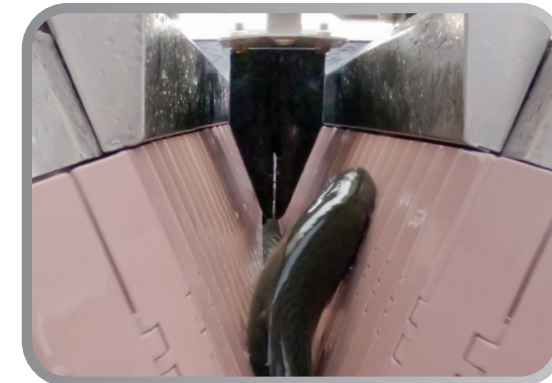
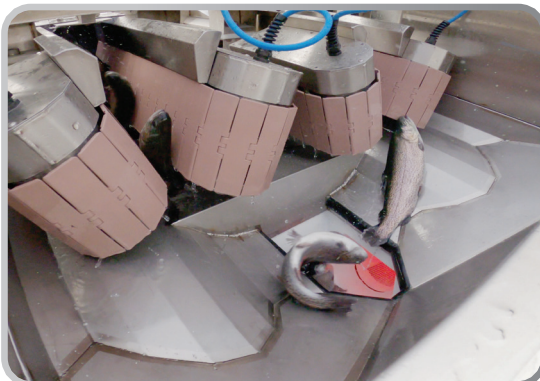
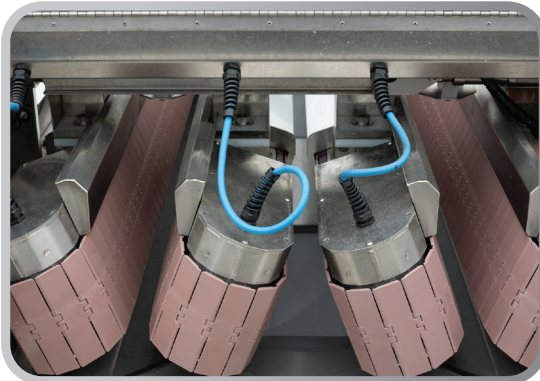
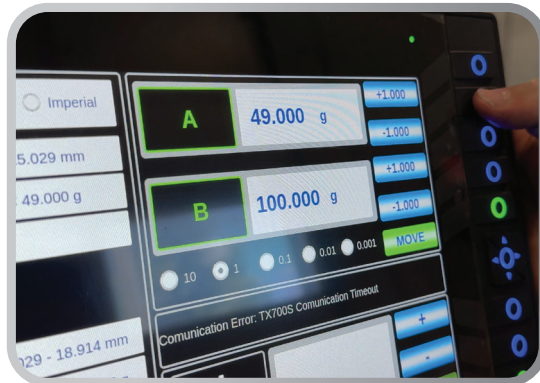
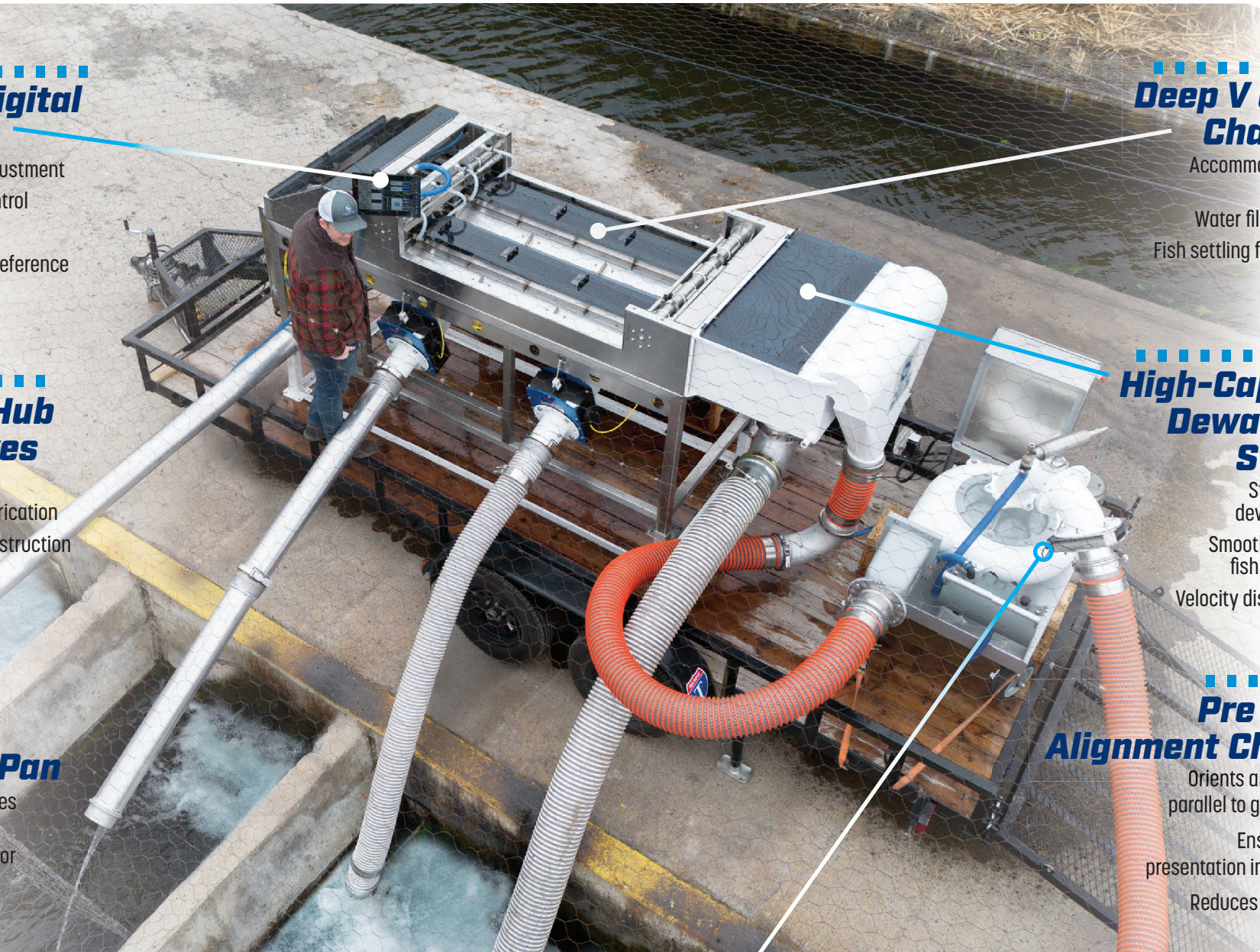
Accommodates small to large fish
Water film lubricated
Fish settling finger guides

High-Capacity Dewatering System

Stainless steel dewatering rack
Smooth, distributed fish presentation
Velocity dissipated inlet

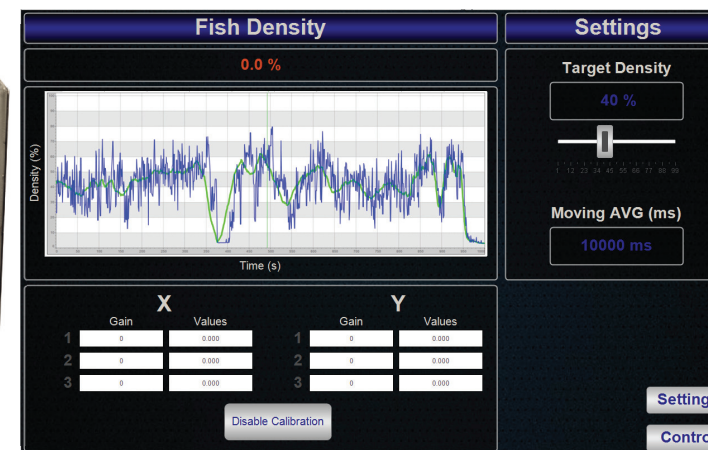
Pre Grade Alignment Channel

Orients and aligns fish parallel to grade channel
Ensures smooth presentation into grade gap
Reduces fish stacking



| Status | | Initial Weights | | Continue |
|--------------|-------------------------------|-----------------|--------------|------------------|
| Count: | Stopped... | CH | Start Weight | Pause |
| Last Error: | | 1 | 150.0 g | Start Counting |
| Data File: | Data File Saved to PLC Memory | 2 | 250.0 g | Stop |
| File Name: | Data_1 | 3 | 350.0 g | Save to USB |
| Date & Time: | 1 - 9 - 2025 22 : 34 | 4 | 450.0 g | Recover Data |
| CH | Average Weight | Total Weight | Count | % of Total Count |
| 1 | 150.0 g | 312.6 g | 1954 | 27.4% |
| 2 | 279.6 g | 835.4 g | 2956 | 13.6% |
| 3 | 370.4 g | 801.8 g | 2184 | 35.4% |
| 4 | 430.9 g | 915.4 g | 1054 | 14.6% |
| All | 0.0 g | 0.0 g | 0 | 100 |

Integrate AquaScan Control
OPTIONAL



Line Density Monitoring
OPTIONAL

Line Density Indicator

Provides visual density feedback
Elevated stack light for 360 deg visual



Green/Increase Yellow/Status Quo Red/Decrease



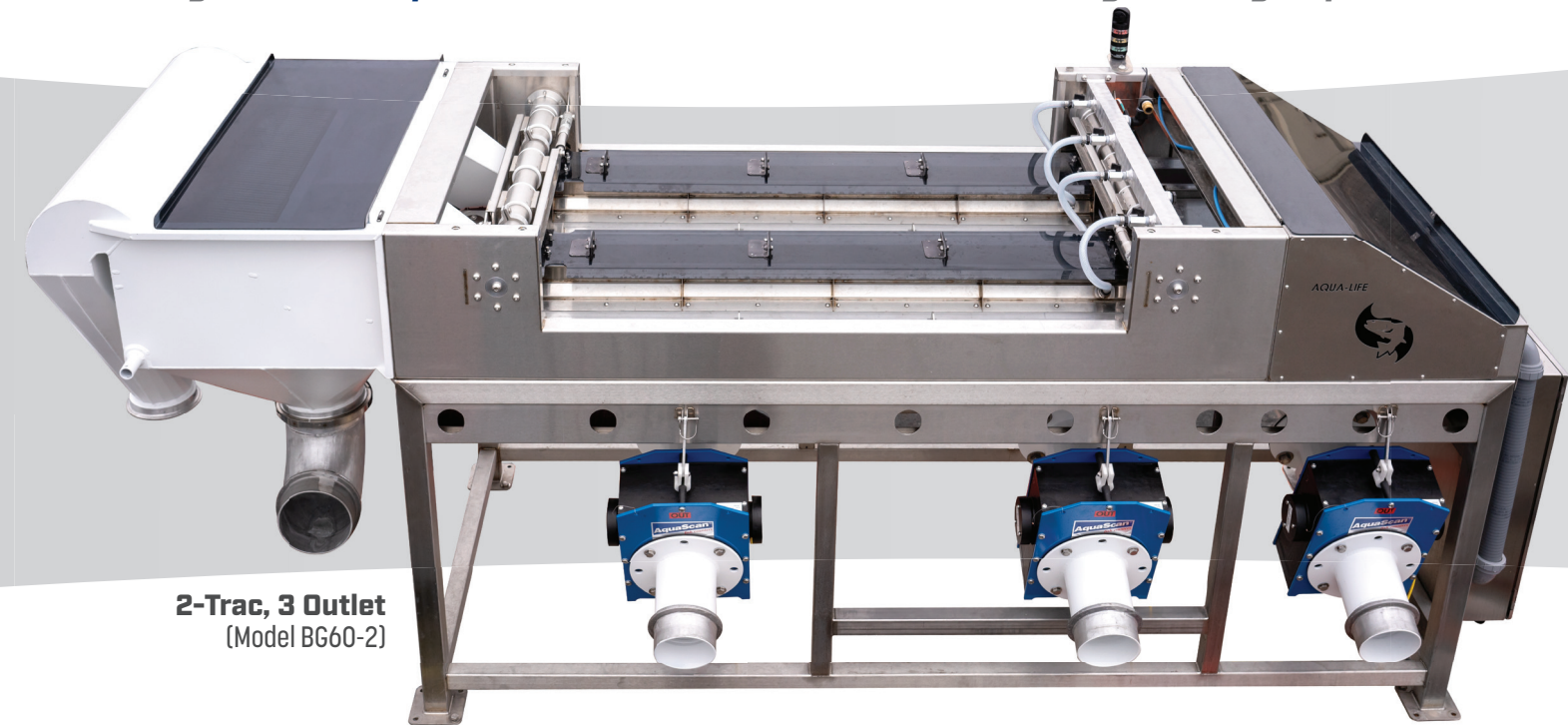
new

BioTrac Belt Grading System

Designed with Aqua-Life's 50 Years of "Fish Smart" Engineering Experience



4-Trac, 3 Outlet
(Model BG60-4)



2-Trac, 3 Outlet
(Model BG60-2)

Specifications

| Model | BG60-2 | BG60-3 | BG60-4 |
|----------------------------------|--------------------------|--------------------------|--------------------------|
| Weight | 2,100lbs | 2,450lbs | 2,800lbs |
| Width | 42.625" (1.08m) | 61.813" (1.58m) | 81" (2.06m) |
| Length w/o Dewaterer | 128" (3.25m) | 128" (3.25m) | 128" (3.25m) |
| Height | 51.25" (1.30m) | 51.25" (1.30m) | 51.25" (1.30m) |
| Min Gap | .20" (5.3mm) | .20" (5.3mm) | .20" (5.3mm) |
| Max Gap | 1.75" (44mm) | 1.75" (44mm) | 1.75" (44mm) |
| Grade Channel Depth | 8.875" [225mm] | 8.875" [225mm] | 8.875" [225mm] |
| Grade Channel Angle | 40 Deg | 40 Deg | 40 Deg |
| Grade Channel Length | 93.8" [2.382m] | 93.8" [2.382m] | 93.8" [2.382m] |
| Recommended Fish Range | 5g - 600g | 5g - 600g | 5g - 600g |
| Grade Discharges | 2, 3, 4 | 2, 3, 4 | 2, 3, 4 |
| Recommended Water Supply | 25 GPM [95LPM] | 38GPM [144LPM] | 50GPM [190LPM] |
| Capacity (25g - 100g - 500g) /hr | 0.76mt - 1.92mt - 5.66mt | 1.13mt - 2.89mt - 8.49mt | 1.5mt - 3.84mt - 11.32mt |
| Motor Power / Each | .75kW | .75kW | .75kW |
| Belt Speed (variable) | .3m/s - 1.2 m/s | .3m/s - 1.2 m/s | .3m/s - 1.2 m/s |



The **BioTrac Belt Grader** is a high capacity, precision built grading system allowing for simple operation and ultimate user control. With seamless integration of counting and density monitoring this platform offers Intuitive operation and reliable results..

The **BioTrac's Stainless Steel** construction has been greatly enhanced by Aqua-Life's state of the art manufacturing capabilities utilizing the latest **Laser Welding Technologies, CNC Machining** and **Robotics** to obtain unmatched **Precision, Rigidity and Longevity.**

MAGIC VALLEY HELI-ARC & MFG., INC
198 Freightway Street • PO Box 511 • Twin Falls, Idaho 83303
USA Phone (208) 733-0503 • USA Fax: (208) 733-0544

info@aqualifeproducts.com
www.AquaLifeProducts.com

